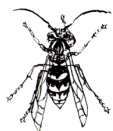


# Lothians Conservation Volunteers

In support of the Scottish Wildlife Trust

## puggled mucker

Summer 2009  
Issue 146



### Inside:

Task programme	3
How to book & what to bring	9
LCV news	11
Social events	14
Views	16
Contact details	23



**Lothians  
Conservation  
Volunteers**

[www.lcv.org.uk](http://www.lcv.org.uk)

Well, welcome one and all to my first *Co-ordinator's Comments*. Special thanks to Sarah Humphreys for all her hard work in this role over the last four years. Thanks are also due to Pauline Jones and Sarah McConnachie who both stepped down after stalwart service in the roles of Membership Secretary and Publicity Officer respectively. Welcome to newly elected committee members: Mark Herron—Membership Secretary, Martin Brownjohn—Publicity and Simon Bonsall—Leader/Driver Organiser.

It has been a good year for LCV with a total of 105 volunteers clocking up 654 work days. We have successfully experimented with the introduction of some Saturday tasks—as Sunday tasks are now regularly filling up. Our finances are healthy and fundraising for a replacement bus is on-going as we wait to hear back from the National Lottery.

One of the first jobs in my new role has been a flick through the last 15 years' *Muckers*. This has thrown up a few surprises. Did you know that LCV used to meet on the Waverley Bridge? Truly an alarming prospect in these roadwork-troubled times. Did you know that in December '99 having to turn a volunteer away from a full task was unusual enough to make it into this column? Did you know that LCV's 40th anniversary will be upon us just next year?!

Hope to see you all on task soon and let's make it a good 40th year.

Louisa Martin—Co-ordinator



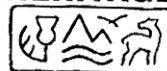
## Lothians Conservation Volunteers

We are a Scottish Charity,  
run entirely by volunteers,  
and we've been doing  
conservation work in and  
around Edinburgh for over  
thirty years.

We are affiliated to BTCV,  
the UK conservation volun-  
teering charity. Our funding  
comes from the clients that  
we work for, and also by  
grants from organisations  
like Scottish Wildlife Trust and  
Scottish Natural Heritage.

Charity number SC020384

**SCOTTISH  
NATURAL  
HERITAGE**



Supported by  
grant aid from  
Scottish Natural  
Heritage.

## The Editor Writes...

Sunlight is at last spilling on to the *Mucker* desk during the brighter evenings as we approach midsummer. If the forecasters are to be believed we are set for a scorcher in 2009, so don your sun hats, slap on the sunscreen and fill up your water bottles. The summer LCV residential takes place on Lewis in a few weeks time and thanks to Matt's sterling work we have an interesting and varied list of day tasks on offer almost every Sunday between now and October.

In this issue we have highlights from the 2008 – 2009 *Annual Report* on page 12. Trevor has provided a residential review, so for a full and frank account of LCV's activities in Tainish earlier this year see page 16. As anyone who has ever been on a residential will know, good food at the end of a day's hard graft is always heartily appreciated. Sarah has agreed to share some of her residential catering know-how and has provided a 'resi recipe'—for ten—on page 19.

Many thanks to everyone who has contributed to this issue of the *Mucker*. This is your newsletter, and contributions from all LCV members are welcome. Most formats can be accommodated—handwritten, drawn, photographed, electronic. Just get in touch with me—contact *Newsletter Editor*, details on contact page of the LCV website—by 25 August if you have something you'd like to see included in the next edition.

# Task Programme



## **June 13 SATURDAY**

### **Vogie: bird-box construction**

Vogie is a popular country park four kilometres south-east of Dalkeith run by Midlothian Council. About half the area is covered by woodland and scrub, with smaller patches of grassland, three ponds, an alder coppice and a conifer plantation. Over the years we have carried out a variety of tasks, including clearing the ponds and sections of the River Tyne, cutting some of the grass on the meadow, repairing part of a drystone dyke, clearing scrub, coppicing alder and planting trees. On this visit, we will be helping with the construction and erection of bird boxes.

## **June 14**

### **Beecraigs Country Park: pathwork**

Beecraigs Country Park, near Linlithgow, is owned and managed by West Lothian Council. It spans 370 hectares over the Bathgate Hills and comprises a commercially active conifer plantation, a deer attraction, a loch, a caravan and camping site and a large play area. Beecraigs is navigable by several way marked trails and offers both the shelter of deep woodland and access to fantastic views over the Forth Valley. LCV has done a variety of tasks here, including tree planting and coppicing, drystone dyking, footpath work, boardwalk construction, bridge building and step building. On this occasion, we will be carrying out pathwork to improve access.

## **June 21**

### **LCV Tool shed: tool maintenance**

Over the years LCV has built up a large collection of hand-tools for conservation work, which are in use all year round. Consequently, they need regular maintenance in order to prolong their useful life and keep them safe to use. This is an opportunity to learn how to clean and oil tools, sharpen blunt blades and make repairs. There will be no need for us to use the minibus for this task: simply meet at the tool shed at 10am. Please contact Ken for further directions.



**June 28**

**Leadburn Community Woodland: tree clearance**

Leadburn Community Woodland was recently purchased from the Forestry Commission by a small group of individuals known as the Friends of Leadburn Community Woodland. The group intend to replace the previous plantation of conifers with native trees such as silver birch, ash, oak and rowan, among others, and planting at the site has recently begun. On this visit we will be clearing trees. The area is boggy in places, so wellies are recommended if you have them. The Friends have kindly invited LCV members to a BBQ after this task and those on task will automatically be involved. Due to the post task BBQ the minibus will return to Edinburgh later in the evening than usual.



**July 3 – 11**

**Isle of Lewis Residential: TBC**

Aline Community Woodland is owned by by The Erisort Trust, a local community group on Lewis. It was purchased by The Trust with funding support from the Scottish Land Fund. It is one of the rare extensive woodland areas on the island and is situated by Loch Seaforth between Stornoway and Tarbert.

The Erisort Trust aims to promote sustainable development of the woodland and create local opportunities by providing a unique mix of educational and recreational facilities. With the woodland rich in flora and fauna they hope to provide a place where there is something for everyone to enjoy at any time of the year.

Tasks on this residential trip will consist mainly of building boardwalk and clearing previously felled logs but there is also likely to be an opportunity to try a spot of bench building, bridge abutment building and painting. We will be leaving early on the Friday morning and will be staying at the Ravenspoint Youth Hostel—see: <http://www.syha.org.uk/hostels/islands/kershader.aspx> for details.

**July 12**

**No task**

There is no task as this date coincides with the end of the Lewis residential.

**July 19**

**Bawsinch: Himalayan balsam removal**

Bawsinch and Duddingston Loch are found on the southern edge of Holyrood Park, just below Arthur's Seat and only three kilometres from the city centre. Formerly a derelict industrial site, Bawsinch is a triangular area next to the south shore of the loch. This 26 hectare reserve, partly owned and managed by the Scottish Wildlife Trust, is a bird sanctuary and has been designated a Site of Special Scientific Interest. The area boasts breeding and wintering wildfowl, marshland with reedbeds and willow, patches of scrub and woodland, some freshwater ponds and an area of grassland named Goose Green. In the past LCV has felled trees, cleared ponds, built log bridges and cleared back invasive vegetation. On this task, we will be controlling the invasive weed Himalayan balsam.

**July 26**

**Addiewell Bing: preparation for tree planting**

Addiewell Bing is a long, narrow reserve of 21 hectares just south of Bathgate in West Lothian, which is leased and managed by the Scottish Wildlife Trust (SWT). It is an excellent example of how a derelict industrial site—part of the oil shale industry—can be converted into an important wildlife refuge.

Most of the reserve is covered by woodland and scrub, but there are also patches of bracken, heather, open grassland and marshy ground with a rich variety of plants and birds. Originally, the area was planted with lodgepole pine to help stabilise the steep sides of this old spoil heap. More recently, these trees have been replaced with native species including oak and ash.

In the past we have felled lodgepole pine, upgraded the footpaths and cleared invading broom from areas of heather. This time, under the guidance of Colin McLean of SWT, we will be preparing cleared areas for planting native trees.



**August 2****Bawsinch: Himalayan balsam removal**

This will be a continuation of the work begun on July 19.

**August 9****Addiewell Bing: preparation for tree planting**

This will be a continuation of the work begun on July 26.

**August 16****Pishwantan: task to be confirmed**

This 60 acre site is located 2 miles south of Gifford, near Haddington in East Lothian. The Life Science Trust was established in 1992 to research, teach and promote education methods that enable people to rediscover connections with the natural world and develop a partnership with their environment. It purchased the woods in 1996 and the site sits at 700 ft on the edge of the Lammermuir Hills. Occupation of the area dates back to prehistoric times and there is a large Iron Age burial mound. Research and teaching is carried out on a wide variety of topics—medicinal plant study, herb growing, land and craft skills and ecological building methods to name a few. On previous tasks, LCV has planted trees and cut gorse for weaving into a fence. For up-to-date information on the nature of this task please consult the LCV website at [www.lcv.org.uk](http://www.lcv.org.uk). This site can be wet so wellies are strongly recommended if you have them!

**August 23****Wooplaw Wood: tree pruning/pond work**

Located on a minor road between Stow and Galashiels, this 40 hectare woodland was acquired in 1988 by Borders Community Woodland. Originally a badly neglected mature conifer woodland and bare land, the site now includes a small pond, birch thickets, a drystone dyke and areas of recently-planted broad-leaved trees. The local community are actively involved with the development of the wood and have built a log cabin, complete with stove. On previous visits LCV has thinned trees to prevent overcrowding, planted trees around a small pond and upgraded a small wooden bridge crossing the Allen water, using local materials. On this visit to the site we will be pruning trees, carrying out pond work and possibly removing invasive birch.

**August 30**

**Vogrie: meadow raking**

See June 13 for a description of this site. On this visit we will be raking up cut grass to help maintain a wild flower meadow.

**September 6**

**Red Moss: birch clearance**

The main feature of Red Moss, which is an SWT reserve above Balerno, is a raised bog. Over time, the sphagnum moss has built up. It now acts like a sponge as the water level at the centre of the raised dome is considerably higher than the nearby Bavelaw reservoir. To prevent the bog drying out, over the past 15 years we have pulled up any birch which has self-seeded. This is an ideal task for people new to conservation work. We need lots of volunteers to form a line to work systematically across the bog. This site can be wet so wellies are recommended if you have them.



**September 13**

**Currie High School: burn clearance**

Currie High School is fortunate in having a burn and woodland in the school grounds. The burn rises at a spring and continues through a woodland gorge to join the Murray Burn. The burn is an excellent habitat for fresh water invertebrates and the woodland forms part of a wildlife corridor which now surrounds the school, following extensive planting by Edinburgh Urban Forest Project. Over the last 12 years, the burn has been cleared of rubbish except for the first section, which offers difficult access. On this occasion, we will be repeating our regular task of helping to clear the burn to enhance the amenity and to improve the marginal plant diversity. Please bring wellington boots if you have them, although they are not essential.

**September 20**

**Bawsinch: path maintenance/weeding**

See July 19 for a description of this site. Under the guidance of Colin McLean from SWT, we will be clearing vegetation to keep footpaths open.

**September 27****Aberlady Bay: sea buckthorn clearance**

Situated on the coast, Aberlady Bay is a Local Nature Reserve owned and managed by East Lothian Council. It is a large area—580 hectares—made up of an open bay with sand and mudflats, as well as expanses of saltings, dunes and grassland. Best known for its birds, over 200 species have been seen in the area. There is also considerable botanical interest—you can see the full plant succession encompassing mudflat, saltmarsh, dune scrub and grassland. On this task, we will be clearing areas of invasive sea buckthorn. Sea buckthorn is quite prickly, so hard-wearing clothes are advisable.

**October 4****Addiewell Bing: tree felling**

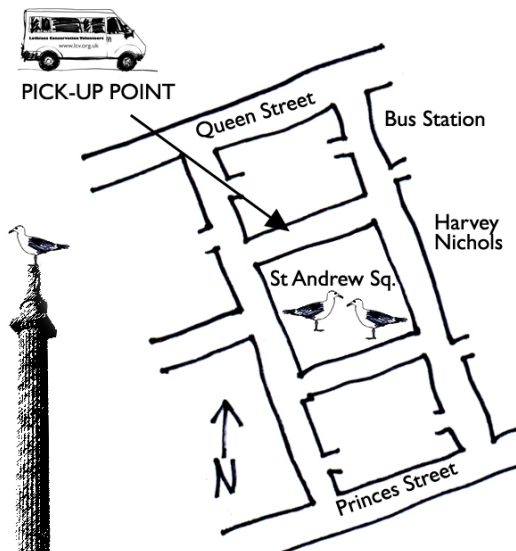
See July 26 for a description of this site. On this visit we will be working with SWT to continue to fell lodgepole pine trees in order to provide more room and light for native species.





# How to book and what to bring

## Day tasks



We meet on the north side of St. Andrew Square at 9.30 a.m. prompt—look out for our yellow minibus. We normally aim to return around 5.30 p.m. Bring waterproofs, a packed lunch and boots or wellies—steel toe-capped wear is recommended. If you have your own work gloves, you might want to bring them, though we do have gloves that anyone can borrow. On hot sunny days bring a sun hat, sunscreen and plenty of drinking water—1.5 to 2 litres is recommended as you will get thirsty. Tea, coffee and biscuits will be provided.

Transport is free, but please phone Debbie, the Transport Secretary, by the Friday evening before the task if you are coming—this is so that we know how many tools to take, whether there's room in the minibus and so that we don't go without you. Tasks are very popular, so you're advised to book early. We also only have 12 seats in the bus, so please come if you've booked, or someone else might miss out. If the bus is full, or it's easier for you, you can of course meet us at the site of the task, but again please inform the Transport Secretary, so we can let you know the meeting point and also when we expect to arrive.

Before you come on any task with us, please make sure that your tetanus vaccination is up to date. We don't cancel the task if it's raining.

## Residential Tasks

Residentials are great fun—see the review on page 16—and they allow LCV to undertake larger tasks further from Edinburgh. They involve a weekend away to work on the Saturday and Sunday. We leave on Friday night and usually take in a chip shop on the way. We get back to Edinburgh on Sunday evening.

Regardless of the time of year, bring a complete change of clothing so that you can get out of your work clothes in the evening. Remember that the weather can be very changeable, so bring a warm jumper and hat and above all don't forget a waterproof jacket and trousers and sturdy footwear. In the summer a sun hat, sunscreen and a sturdy bottle for drinking water are all recommended. Unless otherwise indicated you'll probably need to take a sleeping bag and, if sleeping on the floor, a Karrimat or air-bed.

On residential tasks, breakfasts, lunches and the evening meal are organised by a volunteer. Everyone helps to prepare the food. The fare is usually vegetarian and there is plenty of it. Food for a weekend usually works out at £6 – 7 each. Pick-up is from St. Andrew Square at 7.30 p.m. on Friday, unless otherwise stated. If you want to go on a residential task, please book with the Transport Secretary. Normally, bookings will be accepted for weekend residential tasks up to the preceding Wednesday evening.

Before you come on any task with us, please make sure that your tetanus vaccination is up to date.

## Monthly meetings

Every second Tuesday of the month, we have a committee meeting at 16 Forth Street, off Broughton Street, at 7.30 p.m. We leave a notice near the door with a mobile number to call so we can let you in. You are welcome to join us while we discuss LCV business. We often go for a drink in a local pub afterwards.



# News

## Leading tasks and driving for LCV

We are always looking for new volunteers to lead tasks. There is a description of how to lead a task on the LCV website—look under ‘how to’—and training courses are run from time to time. Normally an experienced leader would be around for backup for the first few tasks. Minibus drivers are also needed—if you are a relatively experienced driver, the first step is to do an LCV familiarisation session with the minibus to see how you get on. Our aim is that all LCV drivers will also receive MiDAS training, which involves theoretical and practical aspects of safe driving. If you might be interested in either leading tasks or driving for LCV, please contact Simon Bonsall.



## LCV clothing

Our range includes LCV tops (S, M, L, XL sizes in deep navy or khaki with the LCV logo on) and fleece neckwarmers with drawstrings, so they also double as hats (one-size in charcoal). Costs are: £25 for a hooded sweatshirt, £20 for a sweatshirt, £12 for a T-Shirt and £7 for a neckwarmer. If you're interested in adding to your wardrobe, please send your order to Mark Herron—*Membership Secretary* on the contact page of the website—noting the item, size and colour. We need payment with your order: please make cheques payable to ‘Lothians Conservation Volunteers’.

## Newsletter subscriptions

If you would like to receive the *Puggled Mucker* newsletter, the cost to cover printing and postage is £4 per year (£2 unwaged). Please send a cheque made payable to ‘Lothians Conservation Volunteers’ to Mark Herron—see *Membership Secretary* on the contact page of the website—and let him know if your contact details change.

## LCV Online

Don't forget that you can check the task and social programme online at [www.lcv.org.uk](http://www.lcv.org.uk). The website is a mine of useful information for leading tasks, working the kettle and catering for large groups on residentials.

## **Keep up with LCV news**

Join our Yahoo! online discussion group, where we publish LCV news, discussions about LCV activities and social events. If you want to subscribe contact David Monaghan—contact details under *Treasurer* on the contact page of the LCV website.

## **Review of the year 2008 - 2009**

This is a shortened version of the *Annual Report*—the full report and accounts will shortly be available on the LCV website or on request.

### **Work carried out**

In the year to April 2009, LCV ran 56 tasks for 14 different clients at 27 different sites. In total, we did 654 days of voluntary work (2008: 594, 2007: 652) for conservation projects in Scotland. We had an average of 10.7 volunteers on each task (2008: 11.6, 2007: 11.9). The average number of volunteers per task has dropped because we have been experimenting with running more tasks to accommodate the demand from our volunteers. Scottish Wildlife Trust (SWT) was again our biggest client, receiving 178 (2008: 128.5) of our total workdays. We continue to maintain a close relationship with the Lothians Member Centre of SWT, as shown by the number of different local SWT sites that we visit. Midlothian Council was our second biggest client, receiving 103 workdays (2008: Midlothian Council, 64). The residential weeks in summer and at New Year were both well attended. In the summer we went to Torosay Castle for the first time, where we carried out access work. At New Year we continued our tradition of sycamore control at Pease Dean, an SWT reserve in the Borders.

### **LCV Minibus**

LCV runs a minibus that is used to transport tools and volunteers to the work sites. The minibus is used exclusively for the purposes of the group, and this year it was driven 3,174 miles (2008: 3,154) on task. The minibus is vital for our operation: it allows us to welcome volunteers who do not have their own transport, and gives us the means to transport bulky tools in safety. We bought the minibus new in 2001. It is stored under cover and is carefully maintained. However it is starting to show its age, and we plan to replace it in 2009, subject to obtaining the necessary grant funding.

## **Tool store**

LCV owns a wide variety of tools. One of the strengths of the group is that we can provide the client with volunteers who are fully equipped for the task. This year has seen a large investment in new tools and safety equipment to ensure that our volunteers have everything they need to do an excellent job.

## **Publicity**

A total of 54 new volunteers (2008: 56) came on their first task with us during the year. Our web site is responsible for the majority of new recruits. During the year the site was visited 21,064 times (2008: 21,363), and in March 2009 was receiving an average of nearly 29 unique visitors per day. We also attract a significant number of volunteers from the Edinburgh Volunteer Centre and by word of mouth. Publicity continued throughout the year. Posters in shops, offices and libraries were supplemented with attendance at local volunteer fairs.

## **Tree Nursery**

LCV runs a tree nursery in which we grow native trees of known provenance. Our Tree Nursery Manager plans the planting in the nursery in consultation with our clients to enable us to provide trees that they require. From a conservation standpoint, being able to provide quality trees of known provenance is important for tree planting projects. It can take up to four years to grow a tree from seed to a size that is suitable for planting on a reserve, and the Tree Nursery thus represents a considerable investment of volunteer time and effort. We are grateful to the City of Edinburgh Council for providing us with a site for our tree nursery.

## **Conclusion**

It has been another busy year for the group. We have again run a wide variety of tasks to maintain the enthusiasm of both long-standing and new volunteers, and our residential tasks have been a popular and well-attended. Retaining new volunteers continues to be our biggest challenge in the year ahead. The committee focus on planning to ensure that there is a supply of volunteers willing to take on senior roles in the group as they become vacant.

# Social Events

For all events it is better to book beforehand by emailing either Alexandra or Emma, social convenors—see *Social Organiser* on the contact page of the LCV website—giving your contact details: this way you can be updated if there is a change in arrangements. But, if you are not sure what you're doing until the last minute, for most events it is possible to just turn up. Updates on social events are sometimes circulated on *LCV News* our online newsgroup, see page 12 for details.

## Sat 20 June



## Trip to St Andrews

The town of St Andrews, on the East coast of Fife, is most famous as the birthplace of golf, but has a lot else to recommend it—the University halls and colleges, the ruined Cathedral & Tower, the Castle ruins, West Sands beach, museums, the Botanic Gardens, the Aquarium and the Old Harbour. Greg Parker is offering to drive the minibus there for a day trip.

Meet at the LCV pick up point—see the map on page 9—at 10.30 a.m. Arriving in St Andrews around noon we could have lunch at the Doll's House and call in at Janetta's for an ice cream during the afternoon. We would aim to be back in Edinburgh by around 7.30 p.m.

There will be a small charge to cover fuel costs. As most of the attractions are in the open air, the trip will be cancelled if it looks like it's going to rain hard all day. For this event please contact Greg so you can be kept up to date with any last-minute changes.



## Wed 24 June

## The Stand Comedy Club

Join LCV for a comedy night at The Stand, 5 York Place. More details about this event to follow from Alexandra on the LCV online newsgroup—see page 12.

**Sun 28 June**

**Leadburn Tree Clearance Post Task BBQ**

LCV members have kindly been invited to a BBQ after the tree clearance task at Leadburn Community Woodland. Those on task will automatically be involved, but if anyone else would like to join our volunteers for the BBQ alone, then please email Emma to express an interest. She will then try and co-ordinate transport/lifts to Leadburn.

**Sat 18 July**

**Allotment Afternoon Tea**

Nicola has kindly invited a maximum of fourteen LCVers to her allotment for an 'allotment afternoon tea'. Her south facing plot is a fairly typical urban allotment and has been managed to encourage biodiversity as well as provide fresh fruit and vegetables. Please bring a small contribution—cucumber sandwiches, jammy dodgers or similar teatime fare all welcome. Nicola has offered cups of tea and will have a kettle on the boil, but you are welcome to bring your own flask or a cool beer if you prefer. It would be useful if everyone arrived together at 2 p.m. so please express your intention to attend to Alexandra.



**Date TBC July**

**Event at the Jazz and Blues Festival**

More details about this event to follow from Alexandra on the LCV online newsgroup—see page 12.

**Fri 21 August**

**Event at The Edinburgh Festival Fringe**

Meet first for a few drinks at the Udderbelly, Bristo Square at 7 p.m. then we will head off to one of the shows. Details of the show that we plan to see will follow from Emma in August. If you have any show suggestions or recommendations then please pass them on to Emma.

**Tues 15 September**

**Pub Quiz at Greyfriars Bobby Pub**

Join LCV in Greyfriars Bobby bar at 8 p.m.—quiz starts at 9 p.m. Greyfriars Bobby is at 30 – 34 Candlemaker Row. Please contact Alexandra or Emma if you would like to join the LCV team, so that we know our numbers. If you want to surprise us on the night, then just turn up at the pub.

# Views

## Spring at Taynish NNR

**Residential: Mar 20 - 22**

LCV weekend residentials to work with Scottish Natural Heritage (SNH) in west Argyll have always been popular, even more so since we decamped from the spartan Benderloch church hall to the luxurious 'Bothy' at Kilmartin. This spring was no exception, and there was a full bus with ten volunteers including three welcome new faces: Kristian, Mark, who did the bulk of the driving—thanks Mark, and Debbie. We were all a bit anxious about the minibus after the previous debacle—see issue 144 for that sad story—and were keen to redeem LCV's reputation for reliable hard graft. Thankfully the van behaved this time... so the rest was up to us.

We were again working in the Taynish National Nature Reserve (NNR) in Knapdale, which comprises a narrow peninsula down the western shore of Loch Sween. In the past we have carried out beech pulling and felling across this site to help preserve the ancient native oak woodland special to the reserve. However our primary task this spring was to clear large swathes of gorse which were encroaching on a small wet grassland that is a known breeding site for the declining marsh fritillary butterfly.

On the Saturday morning met up with Gordon Campbell, the SNH ranger in charge, and we were able to drive right down the reserve and park up in the grounds of Taynish House, an imposing, listed—if somewhat remote—country house now used as a holiday let. From here it was a short walk down to the grassland area, a couple of hundred metres up from the southernmost shore of



On the shores of Loch Sween



Taynish. Apart from a couple of small work parties detailed to seek and destroy any beech saplings invading the woodland, the majority of the work was the highly therapeutic slash and burn routine beloved by all ‘true’ conservationists. Gorse is generally a valuable wildlife habitat, so even some of the more ‘senior’ LCVers had not experienced such large scale clearance—but it was all for a good cause. After few hours of wrestling with the giant spiny-leaved bushes, gorse was making a credible attempt to leapfrog sea buckthorn as LCV’s least popular plant.



Bonfire management

Large fires were lit—by the usual pyromaniacs, with the usual ‘I could have lit that with one match’ bickering—vast quantities of gorse was cut and cremated, and no passing ships were lured on to the reef at night—because we lugged buckets of sea water from the loch to extinguish the inferno before leaving each afternoon. We couldn’t use the nearer source of bog water, as it was teeming with interesting wildlife. With the warm sunny weather, and the heat of the fires, we were happy to relax back in the bothy on Saturday night with a few well earned ales over a dinner made largely from the fruits of Debbie and Trevor’s allotment. A few of the youngsters even had enough energy left to nip next door to the pub.

Light rain through the night made for a cooler Sunday, but the fire was soon raging and even bigger than the day before and the rain held off apart from a traditional lunchtime shower. Progress seemed more rapid and we moved on to attack the gorse further back into the birch woodland fringing of the clearing. By the end of play on Sunday we had achieved a quite dramatic visual impression of

opening up the site, leaving the birch exposed and ready for more clearing—hint to John Halliday for a future task? It was then time for the long drive back, but at least going home in daylight we got to see more of the spectacular views. Thanks to everyone who took part and achieved so much. The rest of the gang were Louisa, Willie, Tony, Keith, Peter and David.



Forest floor at Taynish

### **Further Information:**

For information about Taynish NNR see:  
<http://tinyurl.com/TaynishNNR>

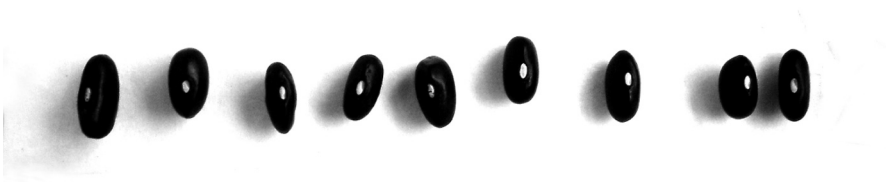
To find out more about the declining marsh fritillary see:  
<http://tinyurl.com/Fritillary>

*Trevor Paterson*

*And thanks Trevor for leading and documenting the Taynish residential and Keith Knight for providing the photos—Ed.*

## Resi Recipe

Sarah McConachie's Jamaican Black Bean Pot—Serves ten.



### Ingredients:

500 g dried black beans  
3 bay leaves  
90ml oil  
3 large onions chopped  
3 garlic cloves, chopped  
3 tsp mustard powder  
3 tablespoons molasses  
6 tablespoons soft dark brown sugar  
3 tsp thyme  
1.5tsp dried chilli flakes  
3 tsp vegetable bouillon powder  
5 peppers (red/yellow) seeded and sliced  
1.7kg butternut squash seeded and cut into 1cm dice  
salt and pepper to taste

Serve with 500g brown rice, bulgar wheat or couscous

### Notes:

- Remember to soak the beans overnight, so you can't do this on the first night of the residential.
- Watch your time—needs 30 minutes initial boiling time for the beans then another 70 minutes in the oven.
- This could probably be done completely on the hob if the oven in the accommodation is too small.

### Method:

1 Soak beans overnight then drain and rinse well. Place in large pan, cover with fresh water and add bay leaves. Boil rapidly for 10 minutes then reduce heat,

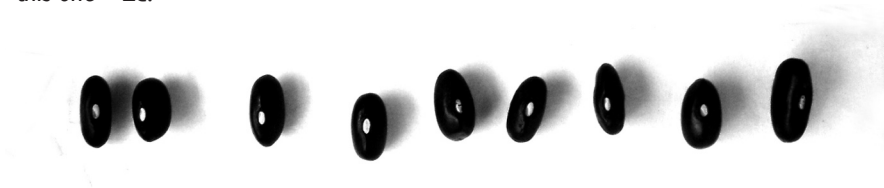
cover and simmer for 30 mins until tender. Drain but reserve cooking water. Preheat oven to 180°C, 350°F or Gas Mark 4.

**2** Heat oil in pan and sauté the onion and garlic for about 5 mins until softened. Add the mustard powder, molasses, sugar, thyme and chilli and cook for 1 minute, stirring. Stir in the black beans and spoon the mixture into a flameproof casserole.

**3** Add enough water to the reserved cooking liquid to make 1 litre then mix in the bouillon powder and pour into the casserole. Bake for 25 minutes.

**4** Add the peppers and squash and mix well. Cover, then bake for 45 minutes until the veg are tender.

*If you are willing to share your vegetarian culinary secrets send a recipe—for ten—to the Newsletter Editor, contact details on the contact page of the LCV website, and we'll pull one out of the pot for the next Mucker. Thanks to Sarah McConachie for this one—Ed.*





*LCV received several unusual enquiries during summer 2009.*

# Task locations



# LCV People

Contact details on *Contact Us* page of LCV website.

**Louisa Martin**

**Co-ordinator**

**David Monaghan**

**Treasurer**

**Matt McCabe**

**Task Organiser**

**Debbie Tribak**

**Transport Secretary**

**Mark Herron**

**Membership Secretary**

**Simon Bonsall**

**Leader/Driver Organiser**

**Martin Brownjohn**

**Publicity**

**Alexandra Costello  
Emma Brown**

**Social Organisers**

**Tony Irving**

**Tree Nursery**

**David Nutter**

**Fundraiser**

**William McSporran**

**Minibus**

**Peter Gilbert**

**Training Organiser**

**Ken Humphreys**

**Toolshed**

**Nicola Murray**

**Newsletter Editor**

# Conservation Tasks

June	<b>SAT 13</b>	Vogrie	Bird box construction
	Sun 14	Beecraigs Country Park	Pathwork
	Sun 21	LCV Tool shed	Tool maintenance
	Sun 28	Leadburn Community Wood	Tree clearance
July	<b>3 – 11</b>	<b>Isle of Lewis Residential</b>	Boardwalk and access work
	Sun 12	N/A	No task
	Sun 19	Bawsinch	Himalayan balsam removal
	Sun 26	Addiewell Bing	Preparation for tree planting
August	Sun 2	Bawsinch	Himalayan balsam removal
	Sun 9	Addiewell Bing	Preparation for tree planting
	Sun 16	Pishwantan	TBC
	Sun 23	Wooplaw Wood	Tree pruning/pond work
	Sun 30	Vogrie	Meadow raking
September	Sun 6	Red Moss	Birch clearance
	Sun 13	Currie High School	Burn clearance
	Sun 20	Bawsinch	Path maintenance/weeding
	Sun 27	Aberlady Bay	Sea buckthorn clearance
October	Sun 4	Addiewell Bing	Tree felling



## Other Events

June	Sat 20	10.30 a.m. – 7.30 p.m.	Day trip to St Andrews
	Wed 24	time TBC	The Stand comedy club
	Sun 28	time TBC	Leadburn post task BBQ
July	Tues 14	7.30 p.m.	<b>Monthly Meeting</b>
	Sat 18	2 p.m.	Allotment Afternoon Tea
	Date TBC	time TBC	Event at Jazz and Blues festival
August	Tues 11	7.30 p.m.	<b>Monthly Meeting</b>
	Fri 21	7 p.m.	Event at Festival Fringe
September	Tues 8	7.30 p.m.	<b>Monthly Meeting</b>
	Tues 15	8 p.m.	Pub quiz